

## SWELLING IN FRONT OF THE NECK

Sunil Kumar

**Citation:** Kumar S. Swelling in front of the neck. Gulf Medical Journal. 2017;6(1):59.

### Case

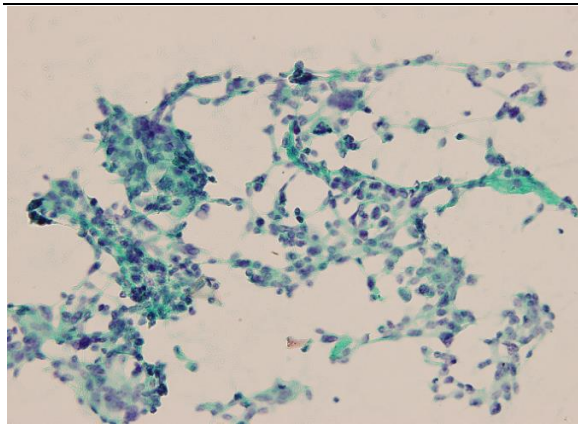
A 30-year-old female presented with swelling of the neck since three years, with recent onset of pain. Clinical differential diagnosis were adenoma, nodular goitre, and carcinoma.

Fine-needle aspiration of swelling showed the following:

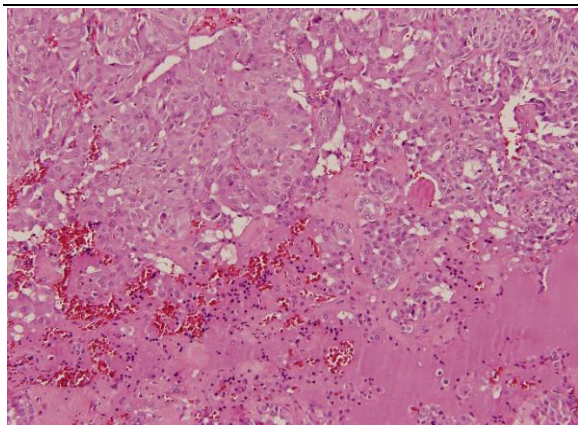
**Figure 1.** Tumor cells had eccentrically placed nucleus and plasmacytoid appearance. Amyloid like material was also seen.

Serum calcitonin levels were advised.

Serum calcitonin level was 1903 (normal range: females less than 5.8 pg/ml).

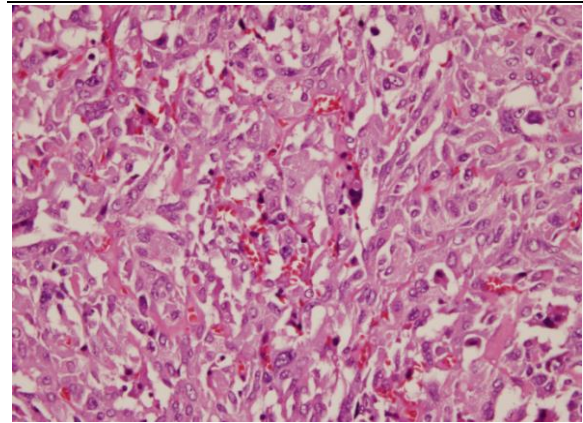


**Figure 2.** Total thyroidectomy was done and malignant neoplasm showing round to polygonal cells with amphophilic cytoplasm was observed.



**Correspondence:** Dr. Sunil Kumar B, Specialist Anatomic Pathology, CABRI, Gulf Medical University, Ajman, UAE. Email: drsunil@cabri.gmu.ac.ae

**Figure 3.** Focally spindling of cells was seen, along with amyloid material.



Following surgery, the serum calcitonin level was 11.5 pg/ml.

### Clinical Quiz: Questions

1. Choose the most appropriate malignancy.
  - (a) Papillary carcinoma of thyroid
  - (b) Medullary carcinoma of thyroid
  - (c) Anaplastic carcinoma
2. Serum calcitonin levels will decrease after surgery in this malignancy.
  - (a) True
  - (b) False
3. Eighty percent of this malignancy is sporadic and rest is associated with MEN syndrome
  - (a) True
  - (b) False
4. Amyloid material seen is an altered calcitonin material.
  - (a) True
  - (b) False
5. Hypocalcemia is not a prominent feature of this malignancy.
  - (a) True
  - (b) False
6. Most commonly associated oncogene with this malignancy is...

**Answer on page 60**